

Effortless Facts August 2019 Edition

From Financial Compliance for Research!



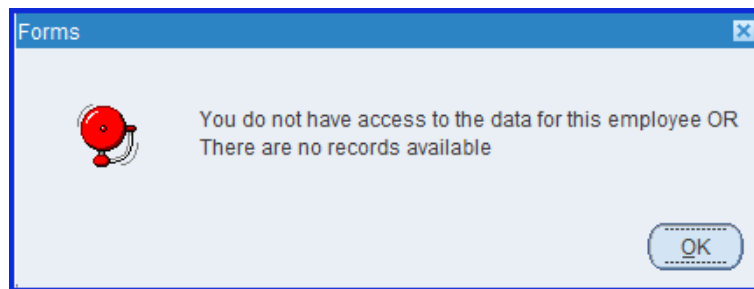
We have completed the University's first certification period using ECC. Although we identified and resolved a few 'bugs', overall, the transition appeared to go relatively smoothly. More importantly, we achieved 100% certification compliance! Thank you for the contributions you made to realize this success!



In accordance with the University's Effort Reporting/Certification policy, PIs are required to devote some level of effort to all active awards. At a minimum, their effort allocation should reflect the time necessary to oversee all aspects of the work. Any effort recognized in excess of the sponsor budget must be cost shared to an institutional account using the 'O' cost share code.



When querying an employee in SPAR, you may get the following error message:



If you have had access to this employee's SPAR in the past, one of the scenarios below will explain the change:

- Your SPAR role has been modified by your administrator to reduce your access to SPARs in this area.*
- The employee has transferred to another department outside of your scope of access. The former department loses access when the Employee Record (ER) has been processed recognizing the transfer.*
- Your prior access to the employee was via a Subset relationship. If the employee or the SPAR Administrator who had granted you the Subset access has transferred or terminated, your Subset relationship to this employee has been deleted. You must contact the SPAR Administrator of the employee's department to request a new Subset relationship based on your business need.*

FCR Website: <http://www.cfo.pitt.edu/fcr/index.php>

Contact Us: SPARhelp@cfo.pitt.edu

August 2019

Sunday	Monday	Tuesday	Wednesday	Thursday	Friday	Saturday
				1	2	3
				Write-Off of Uncertified Effort is 7:00 am	SPAR in query-only mode at 5:00 pm for month-end closing	
4	5	6	7 Introduction to SPAR Workshop 9:00-11:00 am	8	9	10
	SPAR in query-only mode for month-end closing	SPAR in query-only mode for month-end closing	SPAR becomes available for update at 6:00 am			
11	12	13 Advanced SPAR- Cost Sharing Workshop 9:00-11:00 am	14	15	16	17
					SPAR in query-only mode from Midnight - 11:00 am for payroll processing	
18	19	20	21	22	23	24
25	26	27	28	29	30	31