




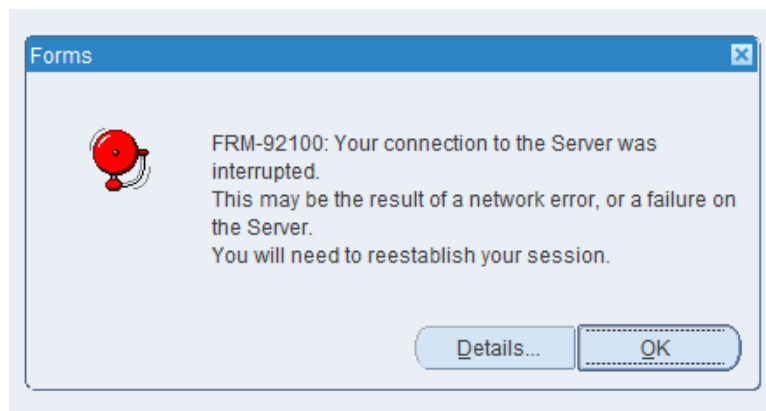
Effortless Facts August 2020 Edition


From Financial Compliance for Research!

 The upcoming **Staff Early Retirement Plan (SERP)** may necessitate the transition of roles in many areas. When considering your area's plans, please keep in mind that SPAR and ECC users are required to complete **mandatory training** prior to being granted system access. Workshop registration is available on our [website](#). These workshops will take place in September and October 2020 and will be offered again in the New Year.

 There may be Federal PIs in your area that will take advantage of the **Faculty Retirement Incentive Plan (FRIP)**. While preparing for their departure, be sure to address the assignment of Proxy and Designee roles to enable certification of their May-August federal effort. The Forms and Instructions are available on our [website](#). If work will continue on an award after the PI's departure, please coordinate sponsor approval of a new PI with the Office of Sponsored Programs.

 Multiple SPAR users have reported a **SPAR Error Message** where they are blocked from completing a SPAR modification. Pitt's technical team is working to identify and resolve the problem. We will alert all SPAR users when the situation has been resolved.



 The **SPAR Modification History Screen** is available to all SPAR users, regardless of role, for SPARs in their area of responsibility. It allows users to review the progression of SPARs from the SPAR Create Process to the current version. [Click here](#) for more detailed information or see additional guidance on the FCR website.

[FCR Website](#)
SPARhelp@cfo.pitt.edu

August 2020

| JUL 26 | 27 | 28 | 29 | 30 | 31 | AUG 1 |
|--|---|----|----|--|---|-------|
| | | | | Last date to modify Jan-Apr SPARs and allow one business day for certification before Write-Off Date** | Last Date to modify Jan-Apr SPAR without 90-Day exception approval, but CAUTION – will not allow time for certification of federal effort*, ** | |
| 2 | 3 Write-off of Uncertified Effort is 7:00 am | 4 | 5 | 6 | 7 | 8 |
| SPAR in query-only mode from 5:00 pm on 8/4 through 6:00 am on 8/7 for month-end closing | | | | | | |
| 9 | 10 | 11 | 12 | 13 | 14 | 15 |
| 16 | 17 | 18 | 19 | 20 | 21 | 22 |
| | | | | | SPAR in query-only mode from Midnight - 11:00 am for payroll processing | |
| 23 | 24 | 25 | 26 | 27 | 28 | 29 |
| 30 | 31 | | | | | |

*Be certain no federal effort is involved in the modification

**SPAR modifications to January - June time periods will be subject to Fiscal-Year End Cut-Off rules